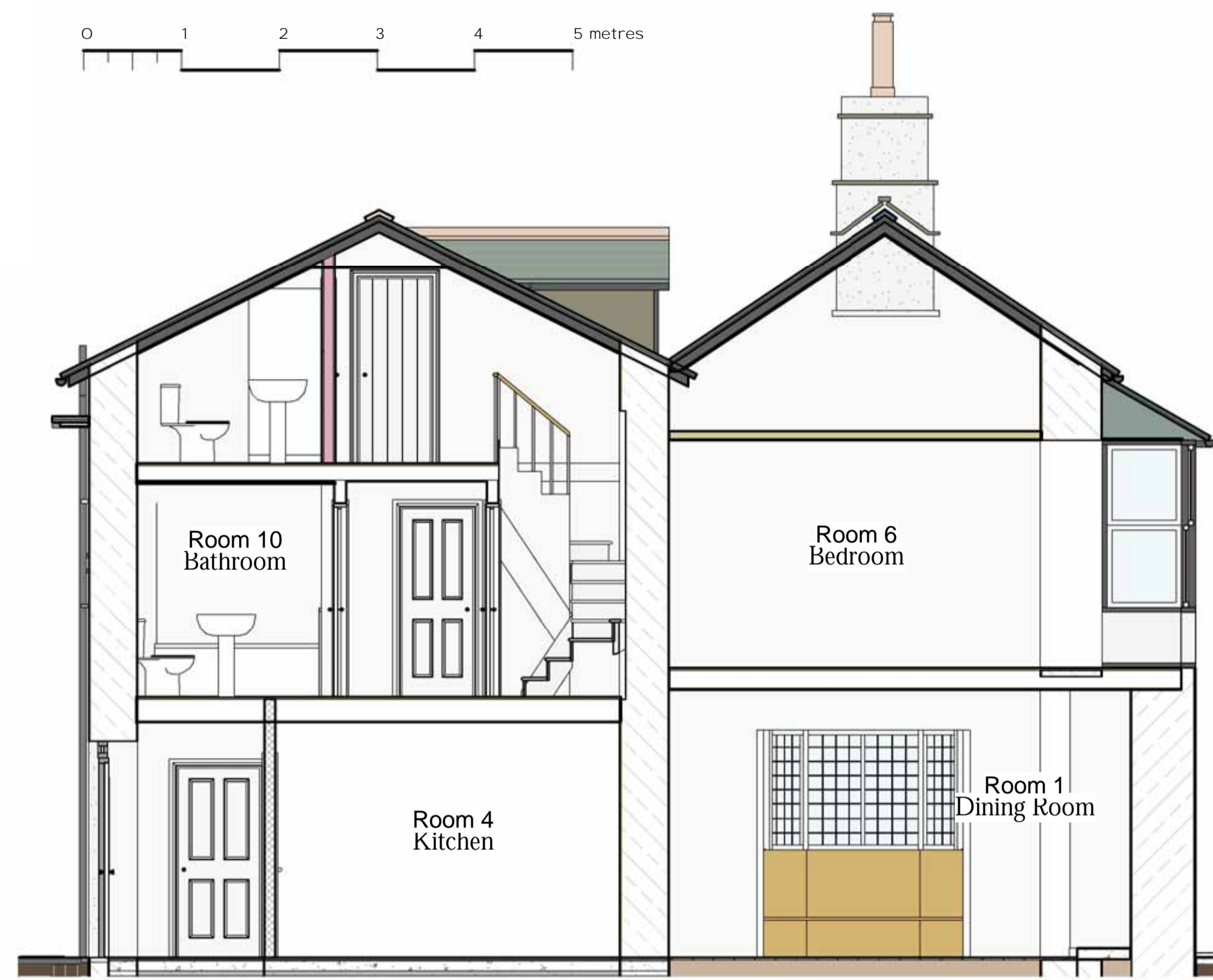


**Section 3**  
1 : 50



**Section 4**  
1 : 50



**Section 5**  
1 : 50



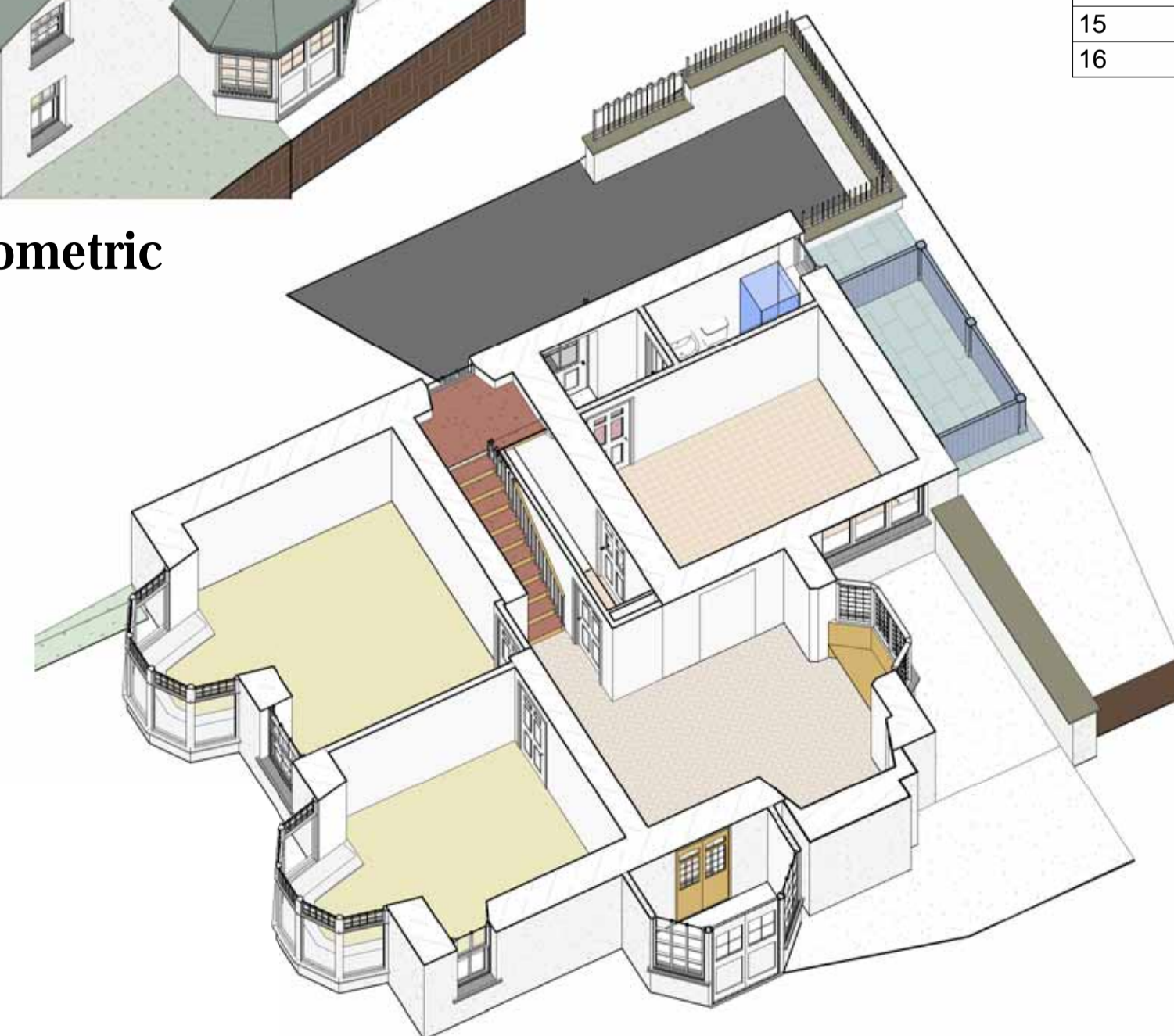
**Section 7**  
1 : 50



**Top Floor Isometric**



**1st Floor Isometric**



**Ground Floor Isometric**

Room Schedule			
Number	Name	Area	Perimeter
1	Dining Room	28 m <sup>2</sup>	27844
2	Bedroom	14 m <sup>2</sup>	14621
3	Lounge	20 m <sup>2</sup>	18303
4	Kitchen	16 m <sup>2</sup>	16238
5	Shower	3 m <sup>2</sup>	7810
6	Bedroom	14 m <sup>2</sup>	14828
7	Bedroom	19 m <sup>2</sup>	17426
8	Bedroom	14 m <sup>2</sup>	15546
9	Bedroom	13 m <sup>2</sup>	17132
10	Bathroom	5 m <sup>2</sup>	9246
11	Shower	2 m <sup>2</sup>	6270
12	Shower	2 m <sup>2</sup>	6226
13	Landing	12 m <sup>2</sup>	17182
14	Bedroom	13 m <sup>2</sup>	15524
15	Shower	4 m <sup>2</sup>	7648
16	Cellar	13 m <sup>2</sup>	14740

03/12/2013 12:51:36

Project Title  
**Loughrigg Cottage  
Ambleside**

Drawing Title  
**Proposed Sections**

Client **A&A Morris**

Project no. 2013-002

Date Issued 3rd Dec 2013

**W&S**  
ARCHITECTURE LTD  
Chartered Architect  
Cluan, Rydal Road, Ambleside  
LA22 9BA

015394 34489  
tech@wsarchitecture.ltd.uk

Drwg No: **A202Aw**

Scale 1 : 50